



# T&S BRASS AND BRONZE WORKS, INC.

2 Saddleback Cove / P.O. Box 1088  
Travelers Rest, SC 29690

Model No.

**B-7112-01**

Item No.

Travelers Rest, SC: 800-476-4103 • Simi Valley, CA: 800-423-0150 • Fax: 864-834-3518 • www.tsbrass.com

This Space for Architect/Engineer Approval

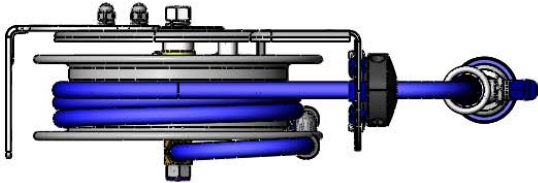
Job Name \_\_\_\_\_ Date \_\_\_\_\_

Model Specified \_\_\_\_\_ Quantity \_\_\_\_\_

Customer/Wholesaler \_\_\_\_\_

Contractor \_\_\_\_\_

Architect/Engineer \_\_\_\_\_



Open Stainless Steel Hose Reel;  
15 Ft. of 3/8" Hose

Ø12"  
[304mm]

3/8" NPT Female  
Inlet (Left Side of  
Reel)

7 1/4"  
[184mm]

14 3/8"  
[365mm]

7 3/16"  
[182mm]

15"  
[381mm]

EB-0107  
High Flow  
Spray Valve



5 1/2"  
[139mm]

Ø1/2"  
[13mm]

6 7/16"  
[164mm]

5 1/4"  
[133mm]

3/4"  
[19mm]

1/2"  
[13mm]

2 3/8"  
[60mm]

## Product Specifications:

3/8" x 15 Ft. Open Stainless Steel Reel w/ High Flow Spray Valve

## Product Compliance:

NSF 61 Exempt (Non-Potable)  
EPA 2005 Non-Compliant (PRSV)



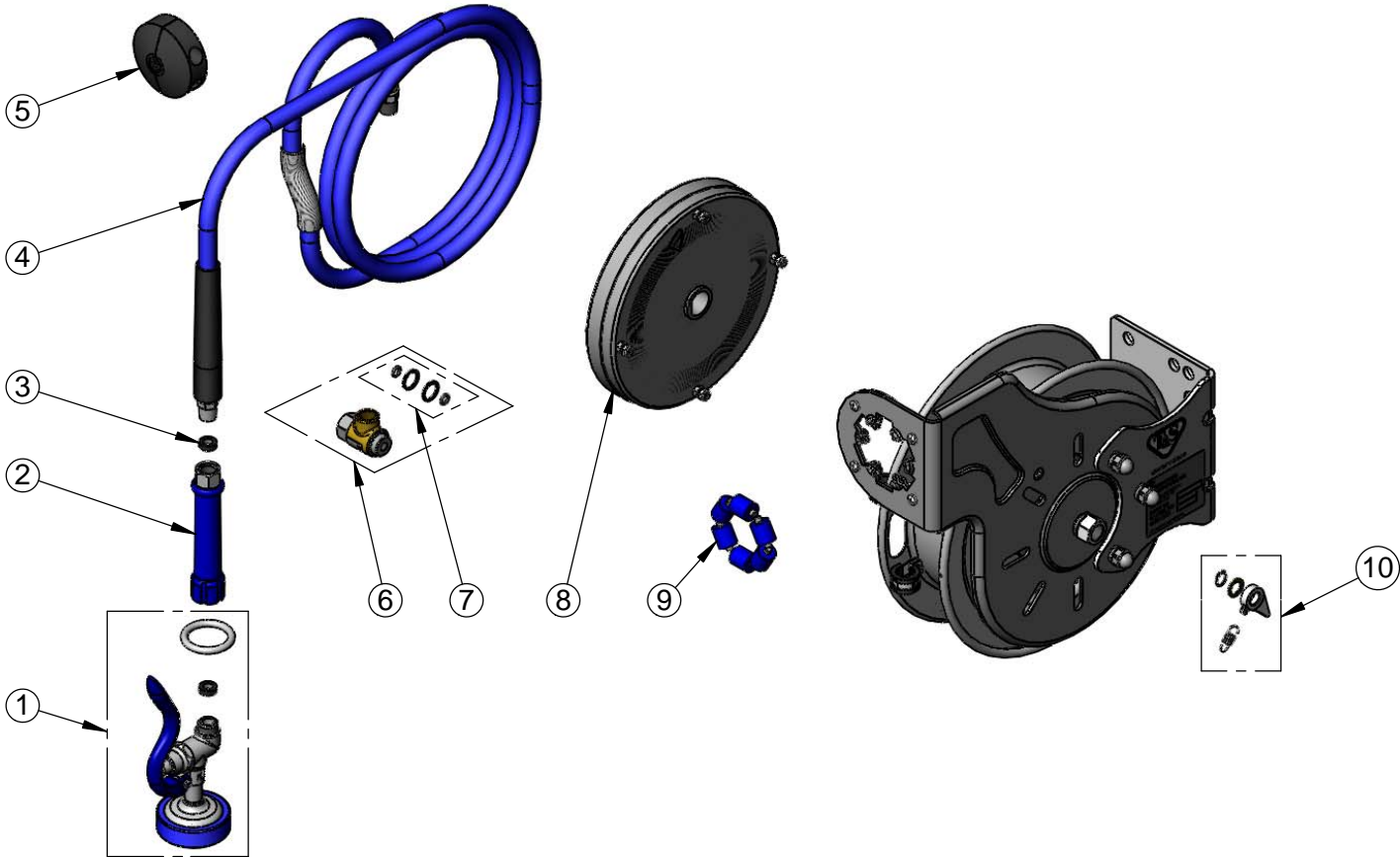
**T&S BRASS AND BRONZE WORKS, INC.**  
2 Saddleback Cove / P.O. Box 1088  
Travelers Rest, SC 29690

Model No.  
**B-7112-01**

Item No.

Travelers Rest, SC: 800-476-4103 • Simi Valley, CA: 800-423-0150 • Fax: 864-834-3518 • [www.tsbrass.com](http://www.tsbrass.com)

ITEM NO.	SALES NO.	DESCRIPTION
1	EB-0107	High Flow Spray Valve
2	012504-40	Blue Grip Handle
3	010476-45	#27 Washer
4	014944-45	3/8" x 15' Hose Replacement Kit
5	014949-45	Hose Stop Repair Kit
6	014946-45	3/8" Swivel Repair Kit
7	014948-45	O-Ring Replacement Kit
8	014933-45	Small Stainless Steel Spring Assembly
9	014938-45	Roller Replacement Kit
10	014940-45	Ratchet Repair Kit



Product Specifications:  
3/8" x 15 Ft. Open Stainless Steel Reel w/ High Flow Spray Valve

Product Compliance:  
NSF 61 Exempt (Non-Potable)  
EPA 2005 Non-Compliant (PRSV)